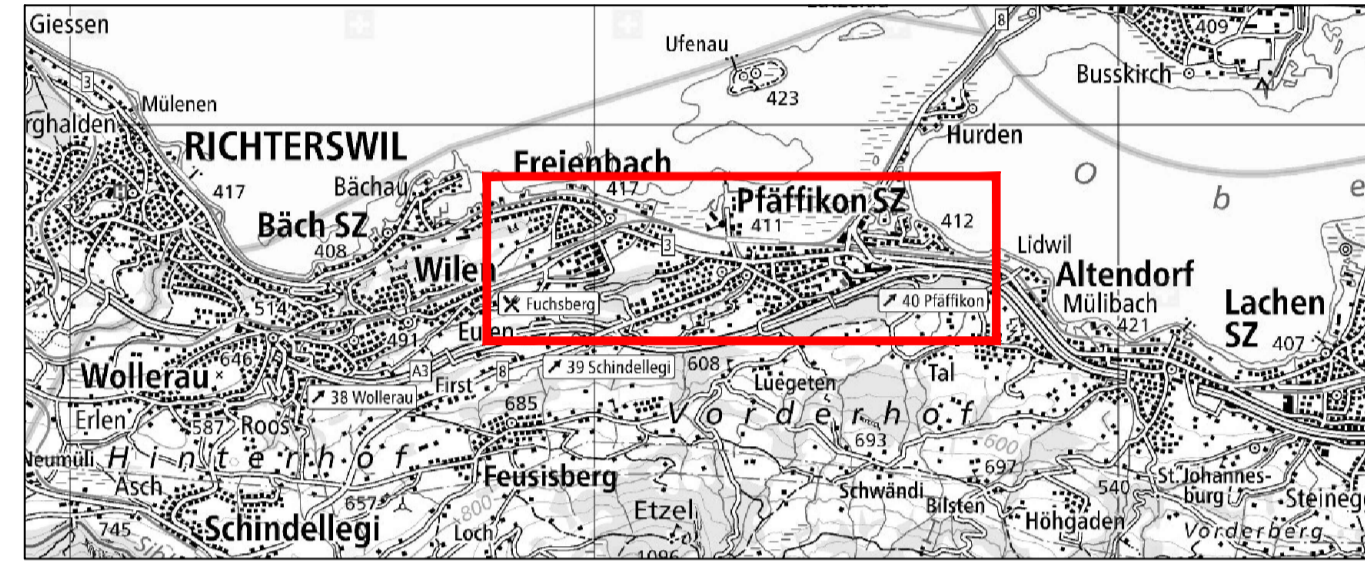


**Baueingabe - 2. Planaufgabe**  
**Fernwärmeleitungsnetz**  
**Gemeinde Freienbach**

**Spülbohrung Churerstrasse**

**Situation 1:100, Schnitt 1:100, Normalprofil 1:25**

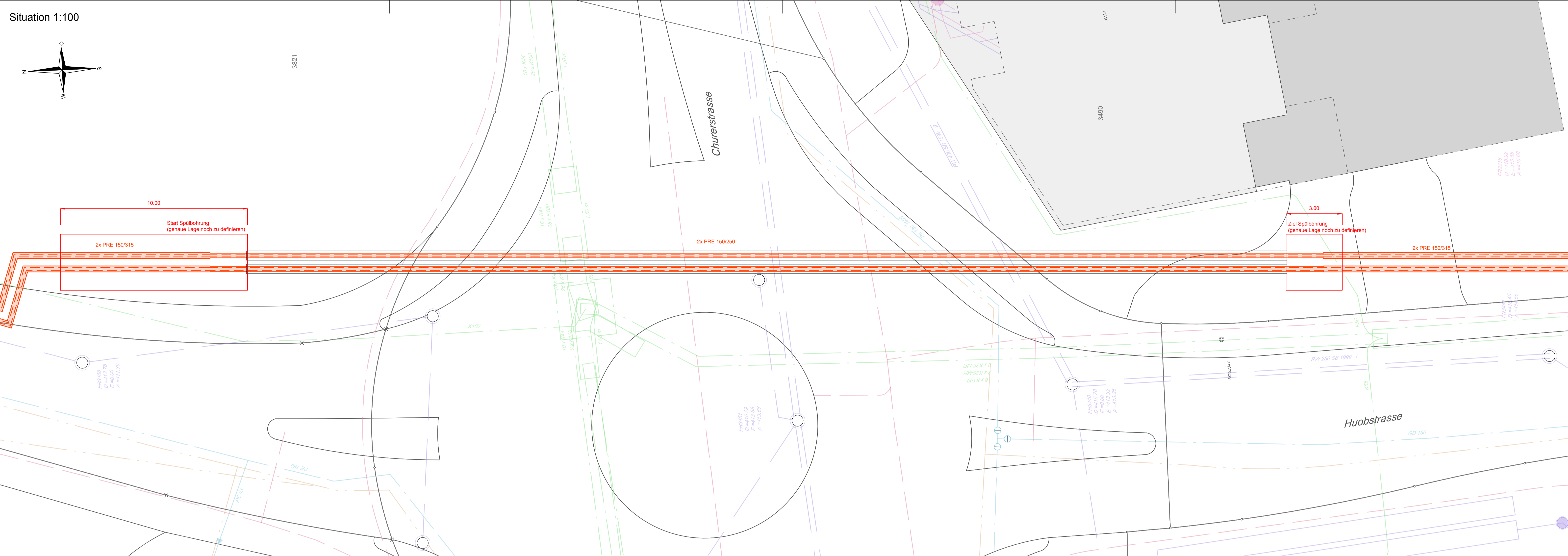


Dokument	14946.03-01-08	Format	105 x 60
Datum	04. September 2020	PL	ASo
Revidiert		SB	SWe

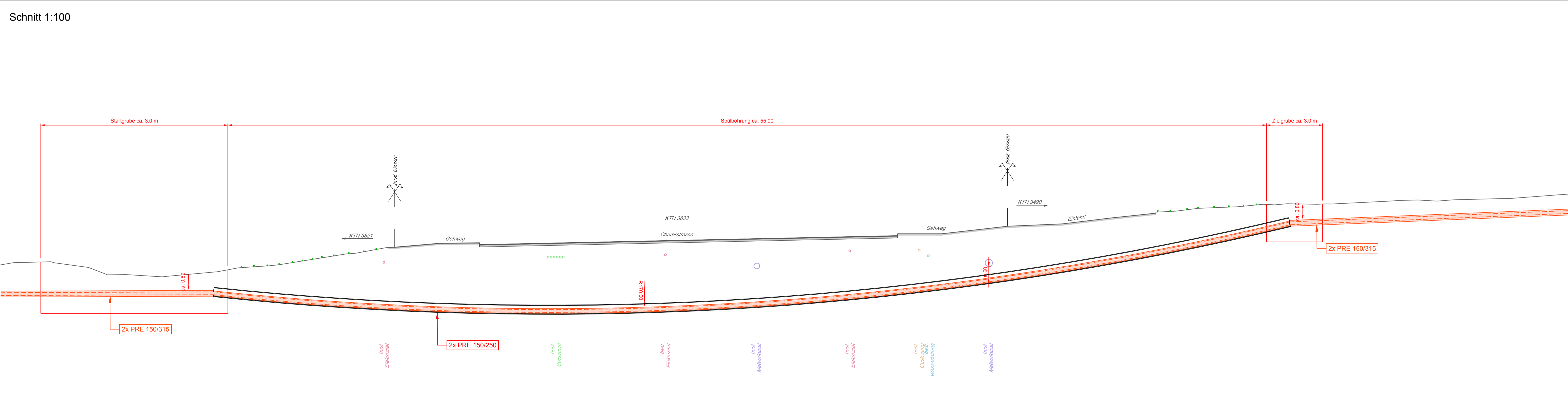
**geoterra**  
 INGENIEURE · GEOMETER · PLANER

Geoterra AG  
 Churerstrasse 44a  
 8808 Pfäffikon SZ  
 Telefon 055 415 48 00  
 E-Mail [pfaffikon@geoterra.ch](mailto:pfaffikon@geoterra.ch)  
[www.geoterra.ch](http://www.geoterra.ch)

Situation 1:100



Schnitt 1:100



Normalprofil 1:25

